

"I just love the way that sounds!"

AMBROSONICS™
LLC
CUSTOM MUSIC PRODUCTS & SERVICES

HD Preamp with DSP-45 24 BIT Preamp Rev. C Basic Mode

08/10/2011

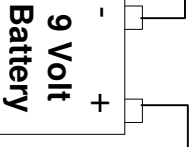
Page 1 of 3

From Guitar Switch
Output
Ground

Use Shielded wire
from Guitar switch to
Input of HD Preamp

For No Bypass Switch,
Add Two Jumpers as
shown: 1 to 2 & 3 to 4.

Jumper S1 to S2
for "Clean" only
operation.



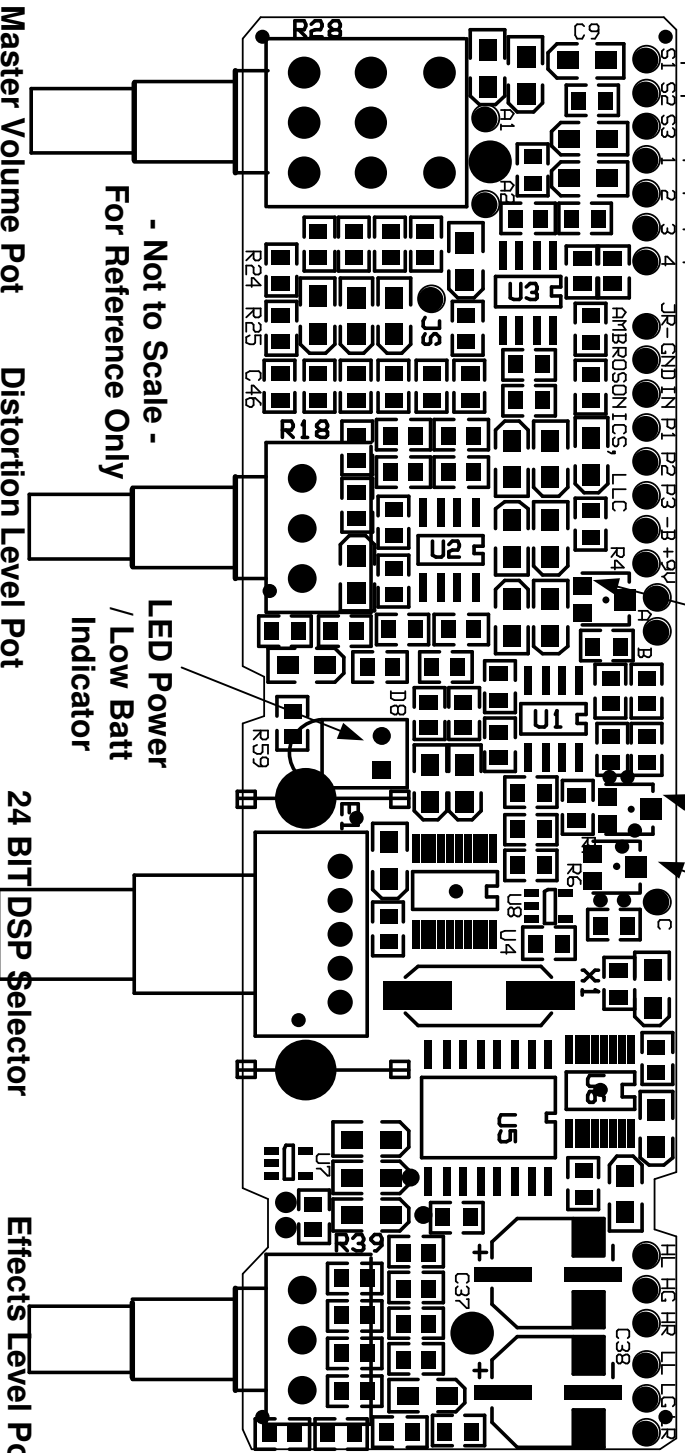
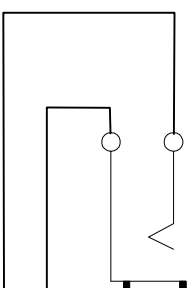
Adjust Trim POTs with Plastic Trimmer
Gain Trim Pot

Treble Trim Pot

Bass Trim Pot

1/4" Mono Output Jack

J1



- Not to Scale -
For Reference Only

LED Power
/ Low Batt
Indicator

24 BIT DSP Selector

Effects Level Pot

"I just love the way that sounds!"

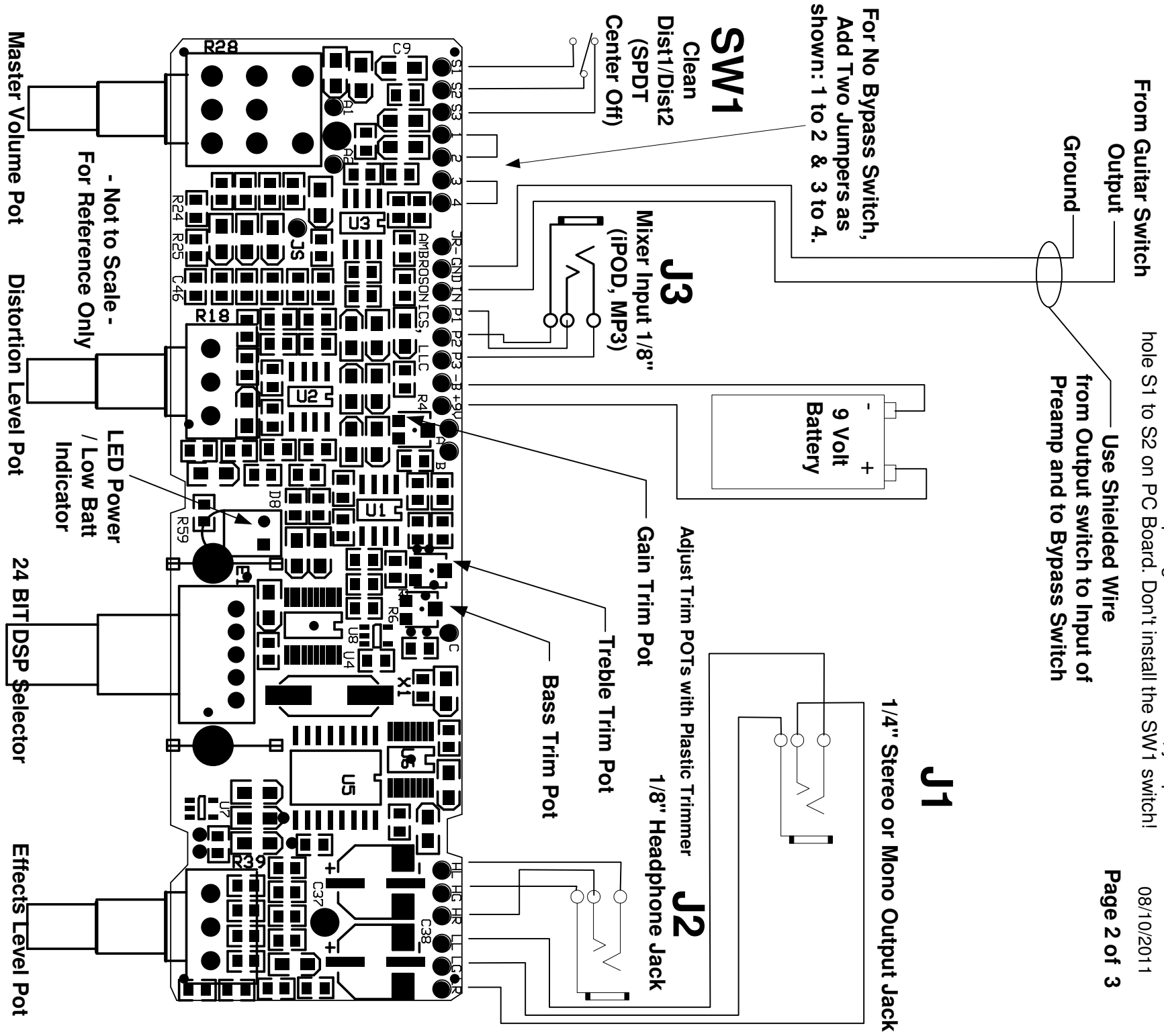
AMBROSONICS™
CUSTOM MUSIC PRODUCTS & SERVICES

DSP-45 24 BIT Preamp

Rev. C Wiring Instructions

No Bypass Switch

Note: For instruments requiring NO DISTORTION, jumper wire hole S1 to S2 on PC Board. Don't install the SW1 switch! 08/10/2011



"I just love the way that sounds!"

AMBROSONICS™
CUSTOM MUSIC PRODUCTS & SERVICES

DSP-45 24 BIT Preamp

Rev. C Wiring Instructions

All Options

Note: For instruments requiring NO DISTORTION, jumper wire hole S1 to S2 on PC Board. Don't install the SW1 switch!

08/10/2011

